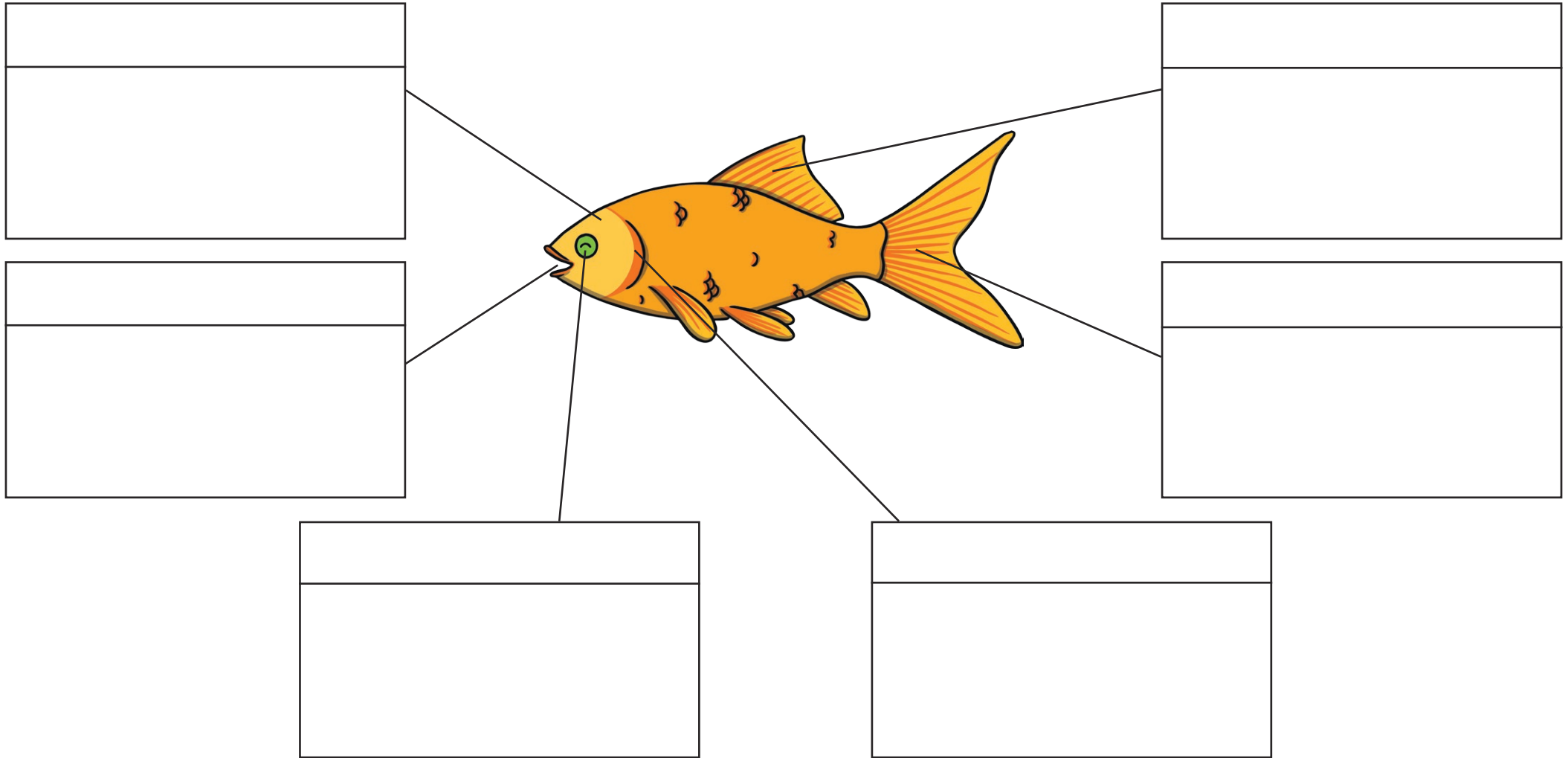


Parts of a Common Goldfish

Use the words below to label the parts of the goldfish. Cut and stick the correct description in each box.



dorsal fin

tail

gill covers

eye

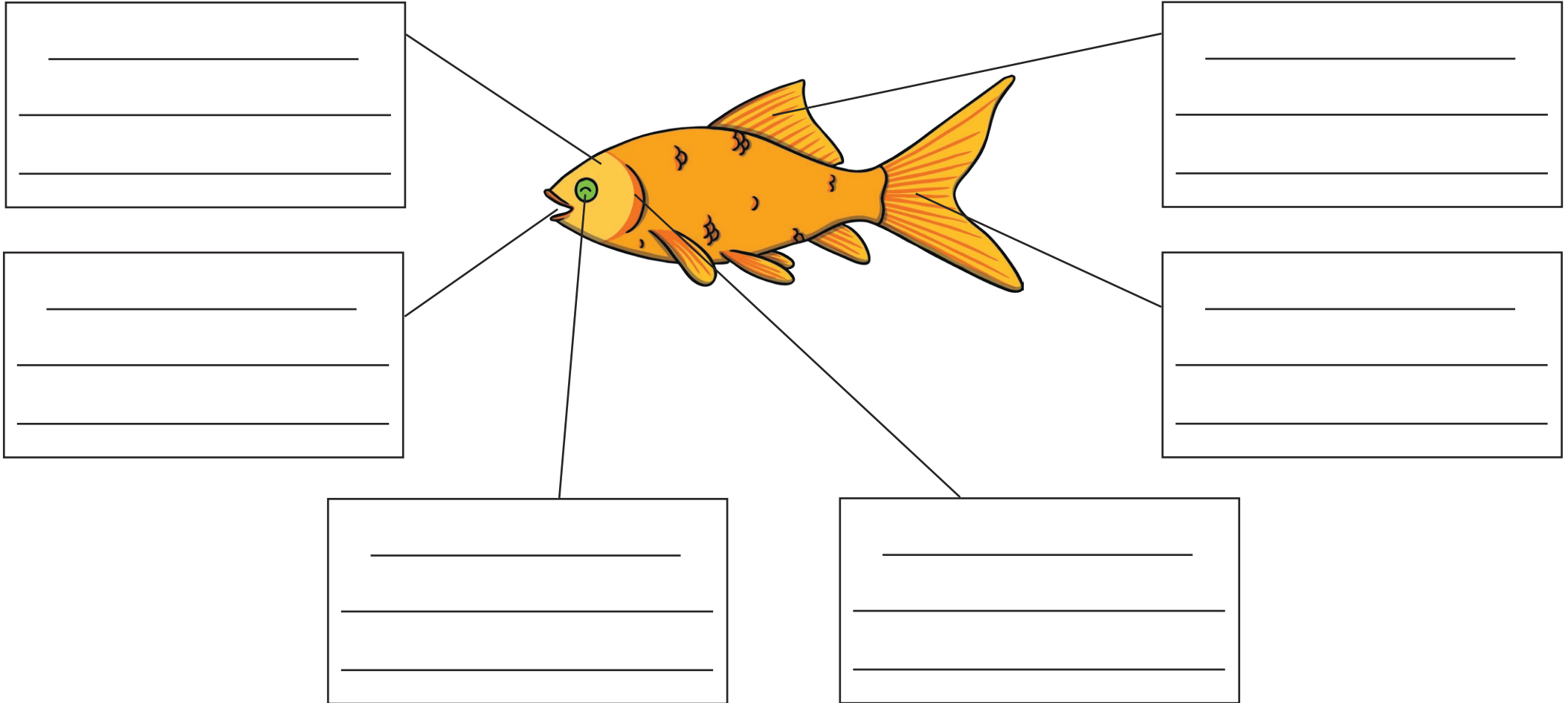
head

mouth

<p>Their eyes are very large so they can see well through water. They can see more colours than humans.</p>	<p>The dorsal fin helps the goldfish swim steadily, and stops it from rolling over in the water.</p>	<p>The goldfish's head doesn't have any scales.</p>
<p>The goldfish uses its tail fin to swim forwards, and to change direction while swimming.</p>	<p>Goldfish don't have teeth inside their mouths! Instead, they are in their throat and they use them to crush food.</p>	<p>Goldfish breathe oxygen through their gills. The gill covers protect the gills.</p>

Parts of a Common Goldfish

Use the words below to label the parts of the goldfish. Then write a description of each body part. You can use the suggested words and phrases to help you.



dorsal fin

tail

gill covers

eye

head

mouth

Suggested words and phrases for descriptions.

large	see	colour	water	swim	steady	roll	scales
direction	forwards	teeth	throat	breathe	oxygen	gill	