

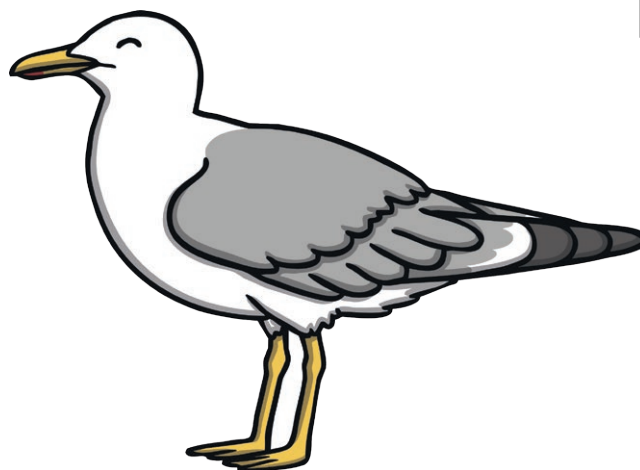
Parts of a Seagull

Draw lines to match the parts of the seagull with their names.

Cut and stick the correct description in the body part boxes.

eye

tail



beak

wing

webbed feet

leg

feathers

These have a transparent lid.

twinkl.com

This has a red spot on the tip.

twinkl.com

These have hollow bones to help it fly.

twinkl.com

This helps the seagull to balance when flying or walking.

twinkl.com

These are thin, and usually orange or red.

twinkl.com

These help the seagull to swim in water and walk on land.

twinkl.com

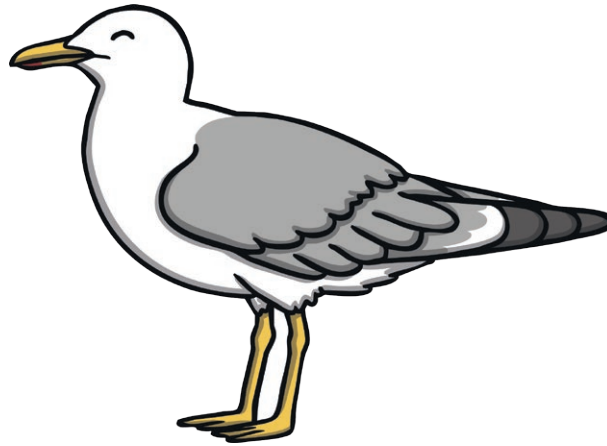
These are white and grey. They help the seagull stay warm and dry.

twinkl.com

Parts of a Seagull

Fill in the names of the parts of the seagull, using the words on the following page to help you.

Write a description of each body part in the box.



Parts of a Seagull

Use these words to fill in the boxes:

eye

beak

leg

tail

wing

webbed feet

feathers

These words and phrases might help you to write your descriptions.

eyelid

hollow bones

white

fly

land

thin

balance

grey

swim

orange

flying

dry and warm

walk

red

walking

red sport

water