



# Describing Dinosaurs

**Today we will be...  
using capital letters and full  
stops to punctuate a sentence.**

**Next**



Can you  
write the  
capital  
version of  
this letter?

a

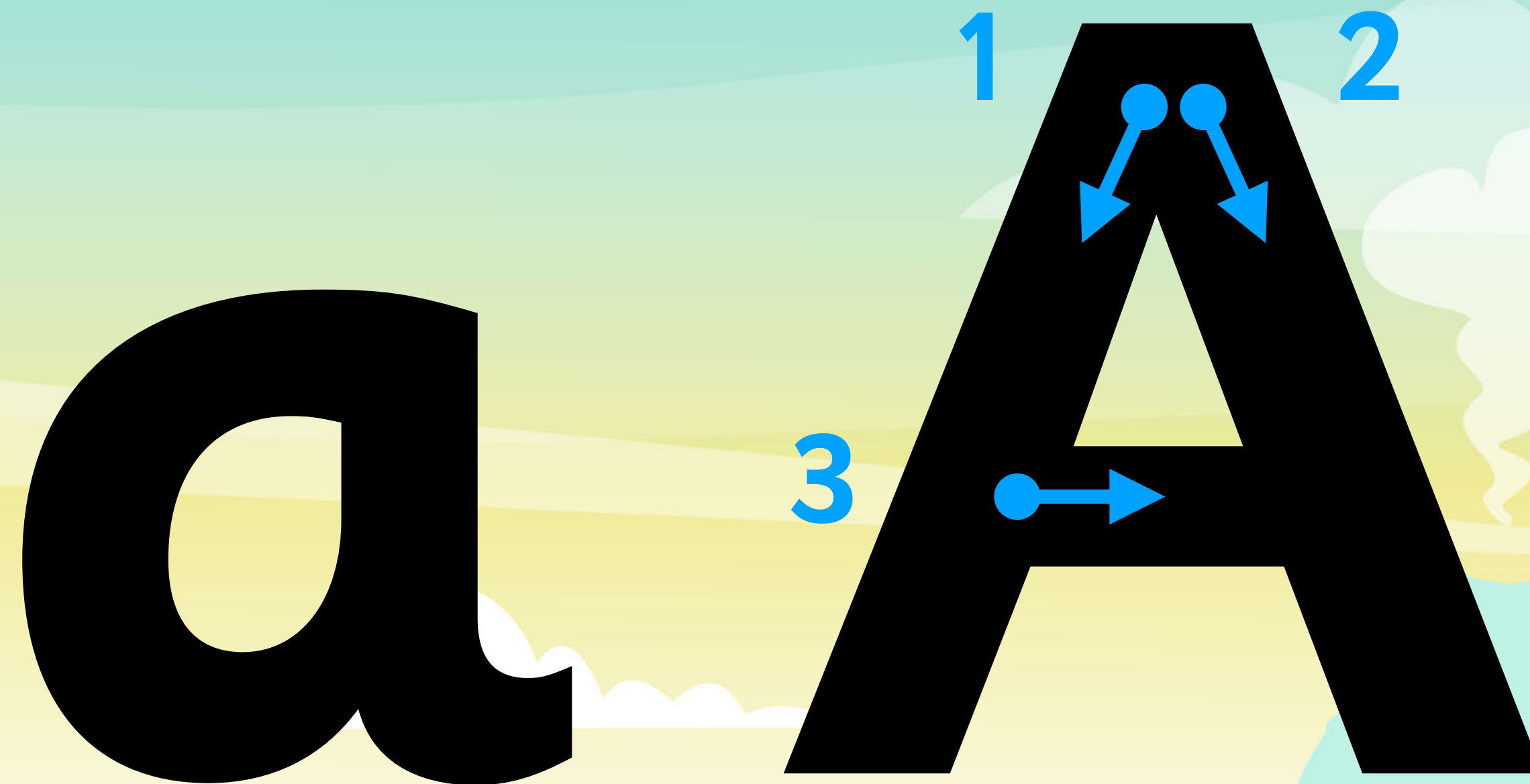


Back

Next



**Good job!**  
**Does your**  
**capital**  
**letter match**  
**this one?**



**Back**

**Next**



Can you  
write the  
capital  
version of  
this letter?

g



Back

Next



**Good job!**  
**Does your**  
**capital**  
**letter match**  
**this one?**

g G

**Back**

**Next**



Can you  
write the  
capital  
version of  
this letter?

i



Back

Next



**Good job!**  
**Does your**  
**capital**  
**letter match**  
**this one?**

**i**

**I**

**Back**

**Next**



Can you  
write the  
capital  
version of  
this letter?

t



Back

Next



**Good job!**  
**Does your**  
**capital**  
**letter match**  
**this one?**

**t**

**T**

**Back**

**Next**



Can you  
write the  
capital  
version of  
this letter?

n



Back

Next



**Good job!**  
**Does your**  
**capital**  
**letter match**  
**this one?**

**n N**



**Back**

**Next**



Can you  
write the  
capital  
version of  
this letter?

S



Back

Next



**Good job!**  
**Does your**  
**capital**  
**letter match**  
**this one?**

**S S**



**Back**

**Next**



Can you  
write the  
capital  
version of  
this letter?

d



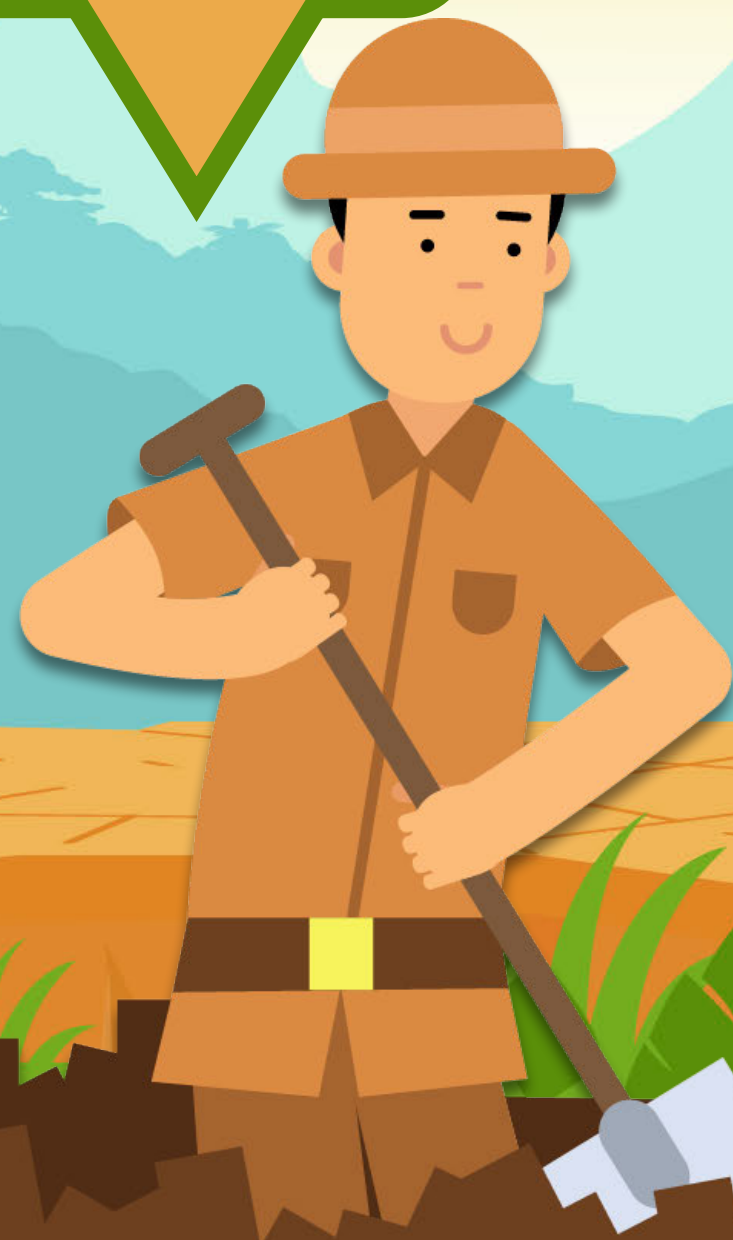
Back

Next



**Good job!**  
**Does your**  
**capital**  
**letter match**  
**this one?**

**d D**



**Back**

**Next**



# the dinosaur i saw had spots



Can you  
spot any  
mistakes in  
this  
sentence?

Back

Next



# the dinosaur i saw had spots



**That's right! This sentence is missing important full stops and capital letters.**

**Back**

**Next**



# the dinosaur i saw had spots



Where  
should the full  
stop go?

Back

Next



# the dinosaur i saw had spots.



**That's right!  
Full stops mark  
the end of a  
sentence.**



**What  
should you do  
when you reach a  
full stop when  
you're reading?**

**Back**

**Next**



**the dinosaur i saw had spots.**

**There's still some missing  
punctuation. What is  
missing?**



**Back**

**Next**



# the dinosaur i saw had spots.

**Of course! This sentence needs capital letters.**

**Where should they go?**

**Back**

**Next**



# The dinosaur i saw had spots.



The start of a sentence always needs a capital letter.



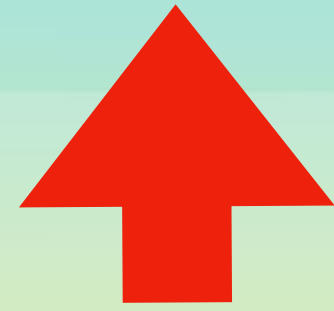
There is one more place that needs a capital letter. Where is it?

Back

Next



# The dinosaur I saw had spots.



When we use the pronoun  
'I' it is always a capital  
letter.



**Back**

**Next**



**Where do the capital letters and full stops go  
in this sentence?**

**he was scary and i ran  
away**



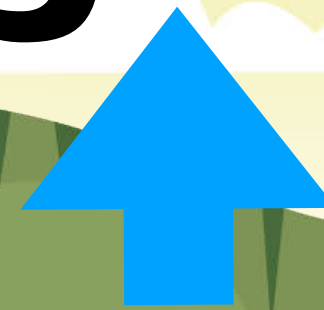
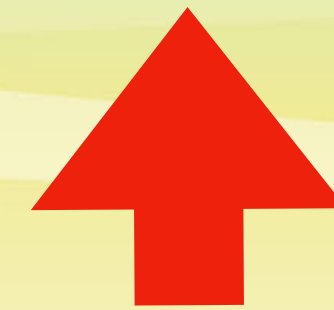
**Back**

**Next**



Did you place them in the right places?

He was scary and I ran  
away.



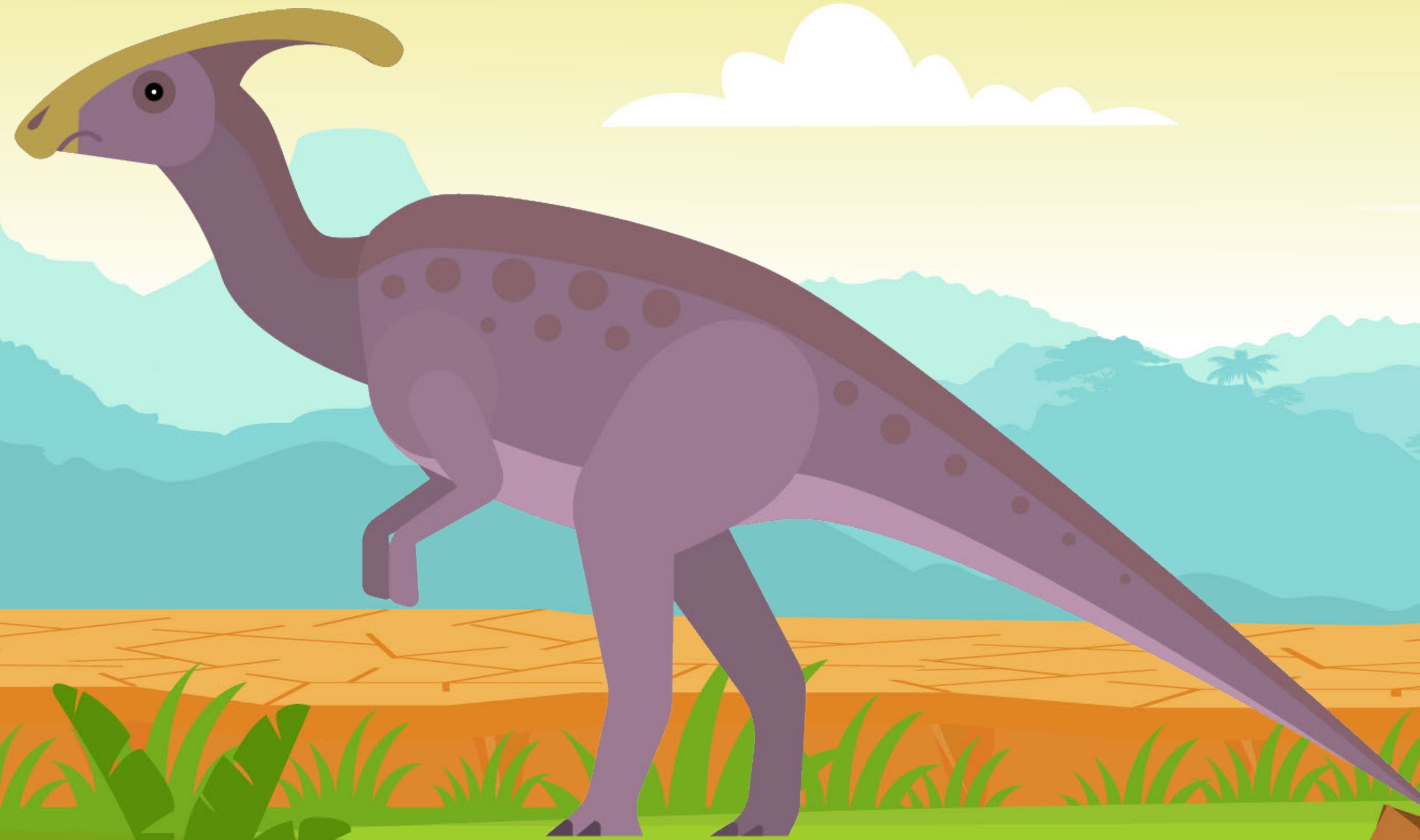
Back

Next



**Where do the capital letters and full stops go  
in this sentence?**

**it has a long tail**



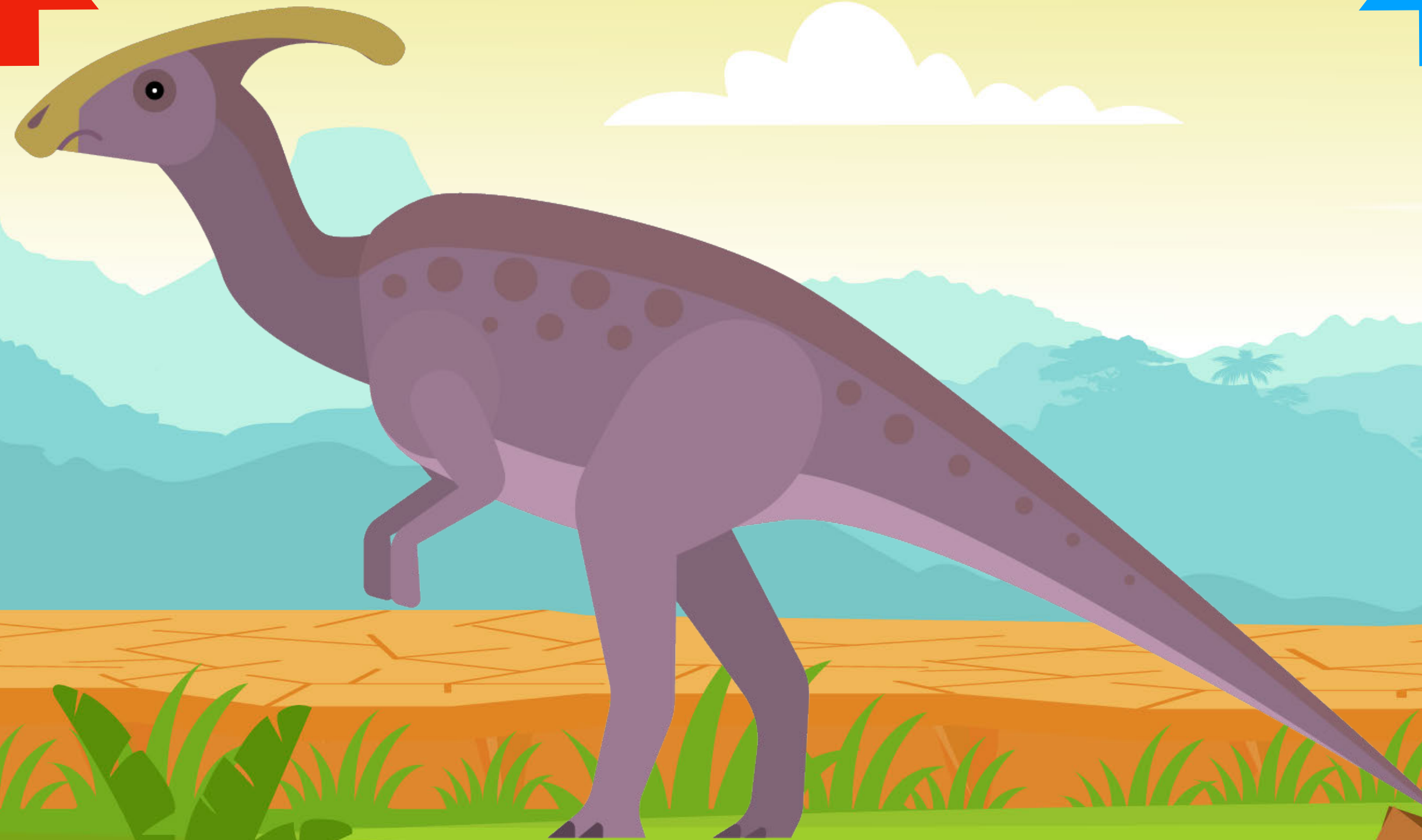
**Back**

**Next**



**Did you place them in the right places?**

**It has a long tail.**



**Back**

**Next**





**he is tall**

**Can you rewrite this  
sentence using capital letters  
and full stops?**

**Back**

**Next**





**He is tall.**



**Did you place them in the  
right places?**

**Back**

**Next**



A vibrant, cartoon-style illustration of a prehistoric landscape. In the foreground, a large green dinosaur with a long neck and red spots along its back stands on a grassy plain. The dinosaur's head is tilted upwards, looking towards a large, white, billowing cloud in the sky. In the background, there are rolling green hills and a prominent blue volcano. A small paleontologist wearing a brown hat and shirt stands to the right of the dinosaur, holding a bone. The sky is a mix of light blue and yellow, suggesting a bright day.

**he has a long neck**

**Can you rewrite this  
sentence using capital letters  
and full stops?**

**Back**

**Next**



**He has a long neck.**



**Did you place them in the  
right places?**

**Back**

**Next**





**Are you  
ready to use  
capital letters and  
full stops?**

**Back**

**Next**



**this dinosaur has  
spots**

**‘BUZZ’ when  
your teacher  
points to a  
section of the  
sentence that  
needs a capital  
letter or a full  
stop!**

**Back**

**Next**



**the dinosaur had a  
long tail**

**‘BUZZ’ when  
your teacher  
points to a  
section of the  
sentence that  
needs a capital  
letter or a full  
stop!**

**Back**

**Next**



# Plenary

**i wish i had brought  
my camera**

**‘BUZZ’ when  
your teacher  
points to a  
section of the  
sentence that  
needs a capital  
letter or a full  
stop!**

**Back**