

The background is a colorful illustration of a prehistoric scene. On the left, a large brown tree trunk with green leaves is visible. In the center, a large orange sign with a green border contains the text. To the right, a blue volcano with a white plume of smoke rises against a light blue sky with white clouds. The ground is a mix of green grass and orange-brown earth.

Describing Dinosaurs

**Today we will be...
learning about and using
adjectives.**

Next

**Secretly choose one of these dinosaurs.
Give your partner clues so that they can guess which
one you've chosen.**



Back

Next

**What kind of words did you use
to give your partner clues?**



Back

Next

Did you use words like these?

big
small
scary
tall
long
spotty

stripy
brown
green
grey
orange
purple



Back

Next

**These are a special kind of word
called adjectives!**

big	stripy
small	brown
scary	green
tall	grey
long	orange
spotty	purple

**Adjectives are
used to describe
nouns.
A noun can be an
object, place or
person.**



Back

Next

Adjectives can describe different things about a noun.
These adjectives are describing a noun's size.

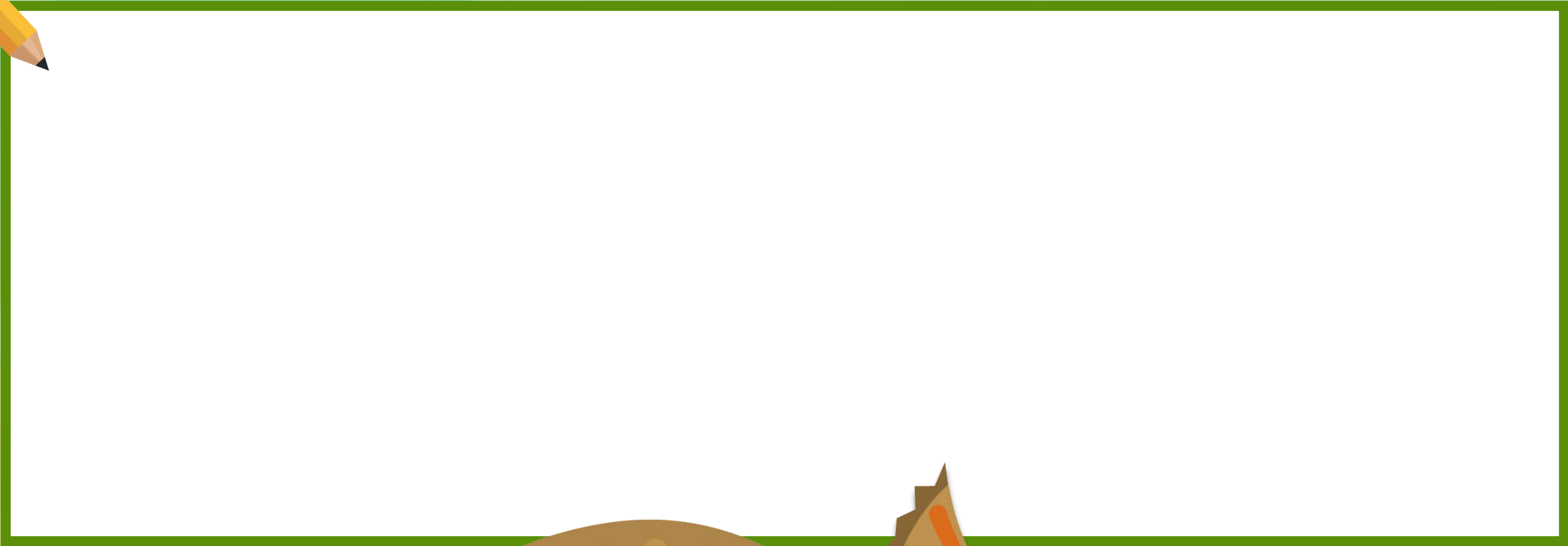
These adjectives
can describe how
big, small, long or
short something is.

tall

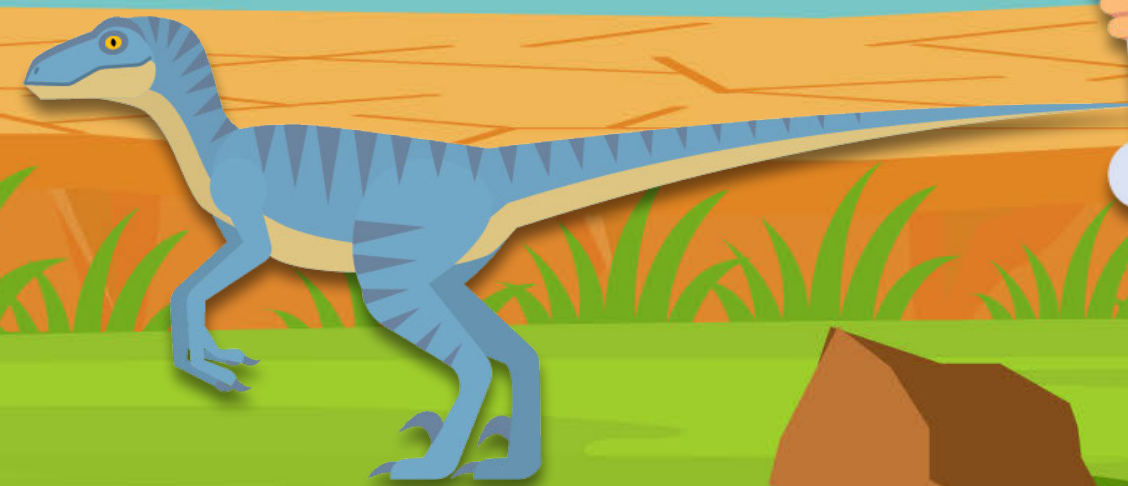
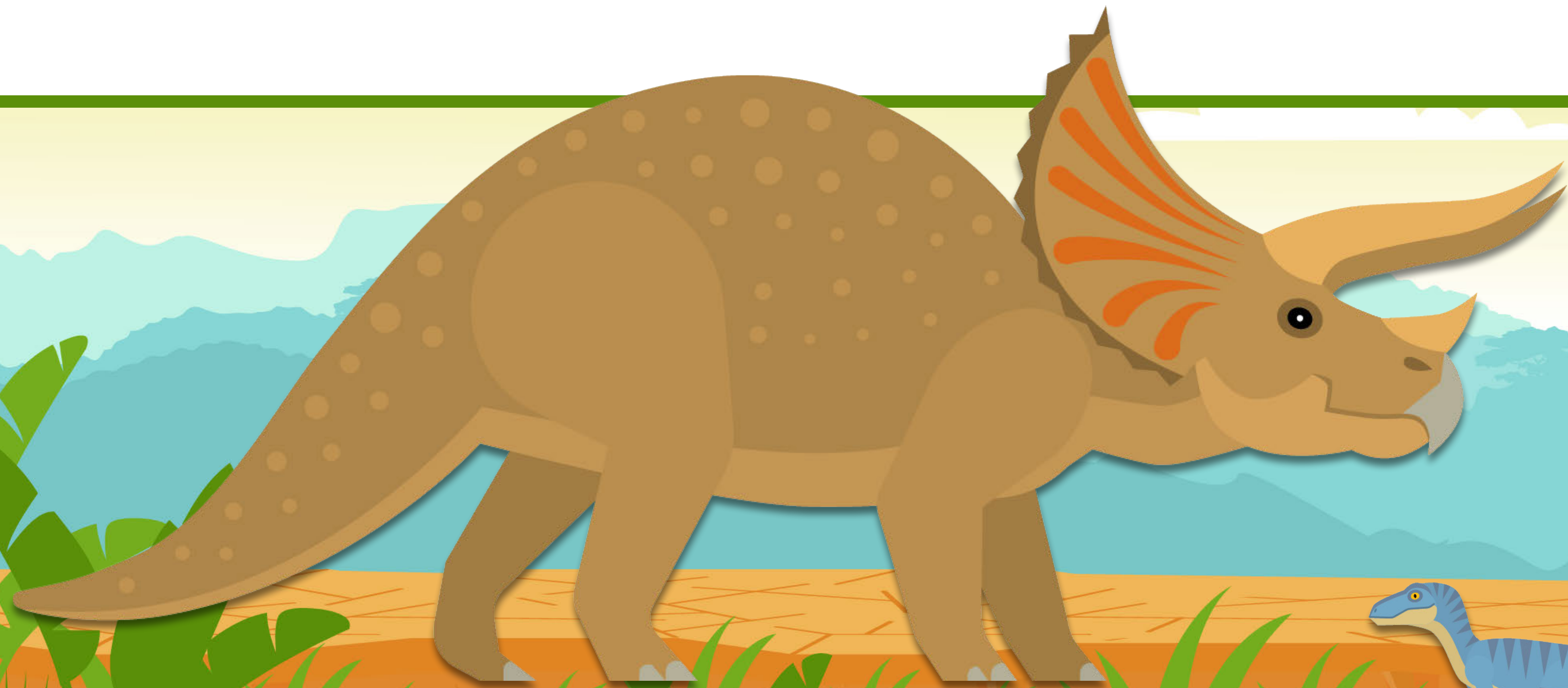
short

Back

Next



**Can you
think of
any more
size
adjectives?**



Back

Next

Adjectives can describe different things about a noun.
These adjectives are describing a noun's texture.

These adjectives
can describe how a
noun might feel if
you touched it.

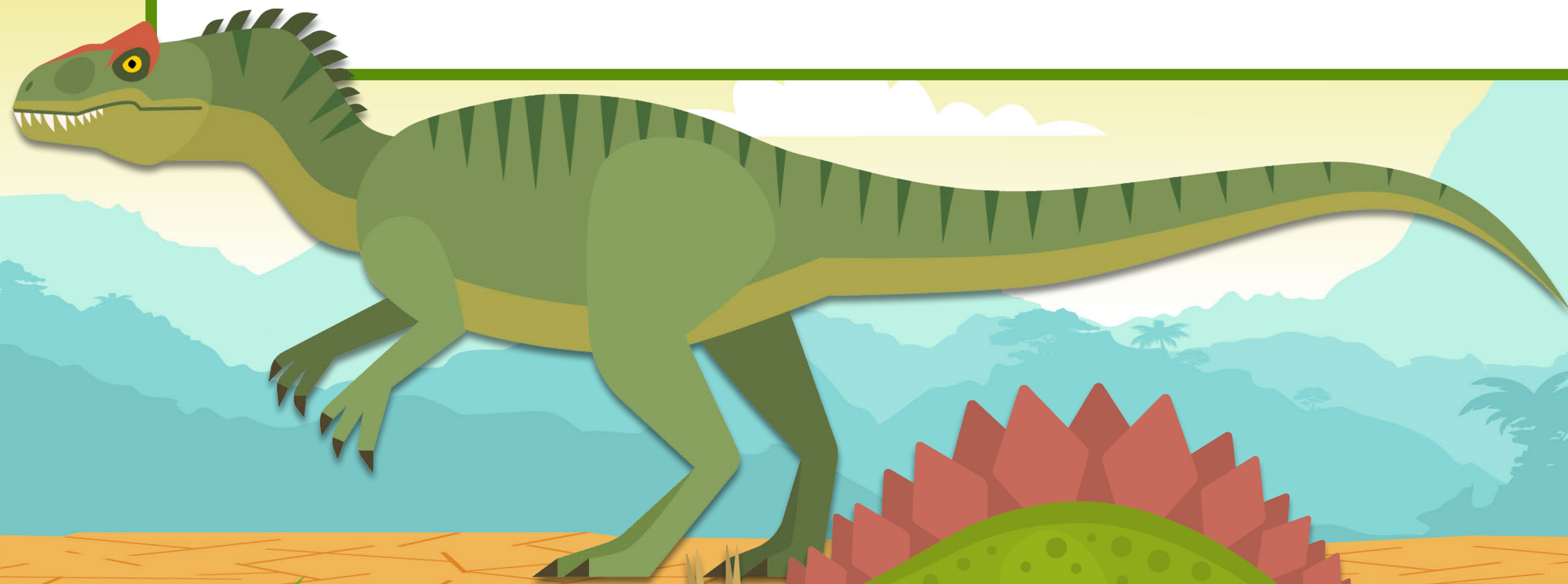
smooth

bumpy

Back

Next

Can you think of any more texture adjectives?



Back

Next

Adjectives can describe different things about a noun.
These adjectives are describing a noun's appearance.

These adjectives
can describe how
a noun looks. This
might include its
colour.

grey

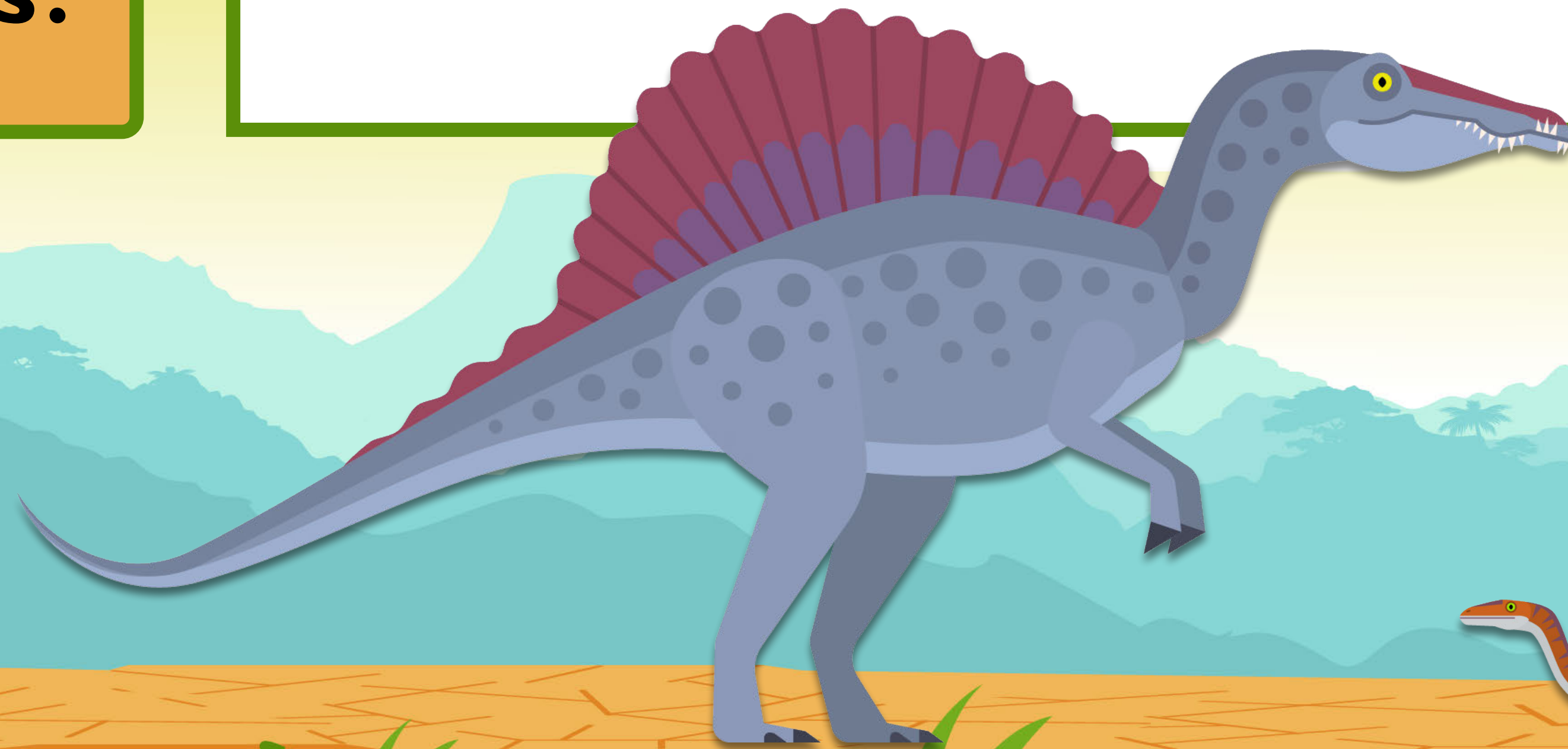
spotty



Back

Next

Can you
think of any
more
appearance
adjectives?



Back

Next



**Are you
ready to
use some
adjectives
on your
own?**

Back

Next

Plenary

**Yes, it's a
match!**

**No! Feed it
to the T-Rex!**

**Does this
adjective
match this
dinosaur?**

tiny

Back



**Hmm. The
Tyrannosaurus seems
to think that one
matched! Click here to
go back.**





**Great
job!
Click here to
try another!**

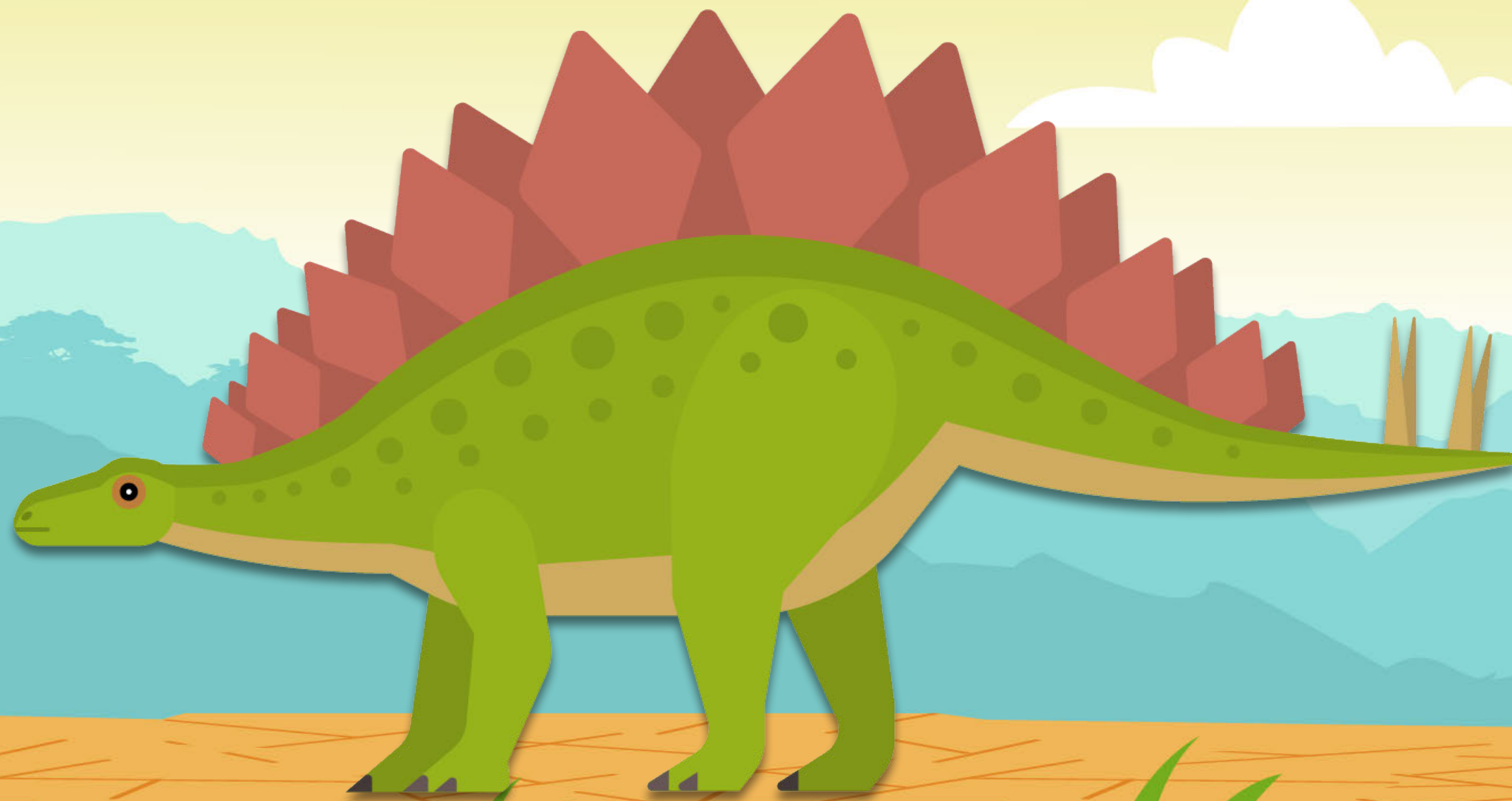
Plenary

**Yes, it's a
match!**

**No! Feed it
to the T-Rex!**

stripy

**Does this
adjective
match this
dinosaur?**



Plenary

**I think he
wanted to eat
that one! Click
here to go
back.**



stripy

**Well done! It didn't
match!
Click here to try
another!**

Back

Plenary

**Yes, it's a
match!**

**No! Feed it
to the T-Rex!**

**Does this
adjective
match this
dinosaur?**



tall



**Hmm. The
Tyrannosaurus seems
to think that one
matched! Click here to
go back.**



Plenary



tall

**Well done! It didn't
match!
Click here to try
another!**

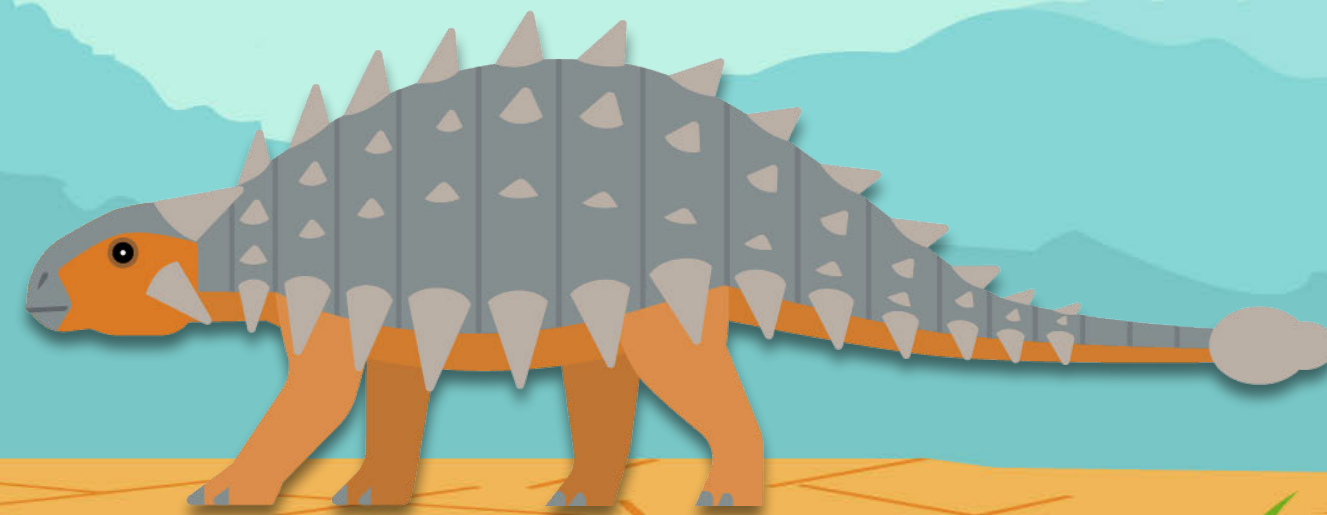
Plenary

**Yes, it's a
match!**

**No! Feed it
to the T-Rex!**

bumpy

**Does this
adjective
match this
dinosaur?**



**Hmm. The
Tyrannosaurus seems
to think that one
matched! Click here to
go back.**





**Great
job!
Click here to
try another!**

Plenary

**Yes, it's a
match!**

**No! Feed it
to the T-Rex!**

spiky

**Does this
adjective
match this
dinosaur?**

Plenary

**I think he
wanted to eat
that one! Click
here to go
back.**

Plenary

**It didn't
match!
Well done
adjective
experts!**

